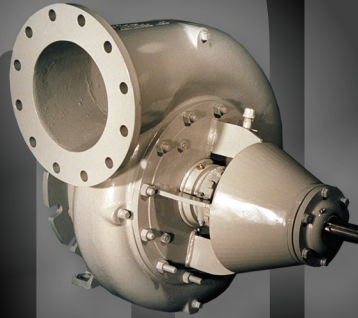
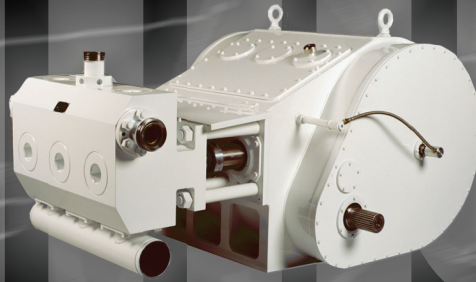


# PUMPS

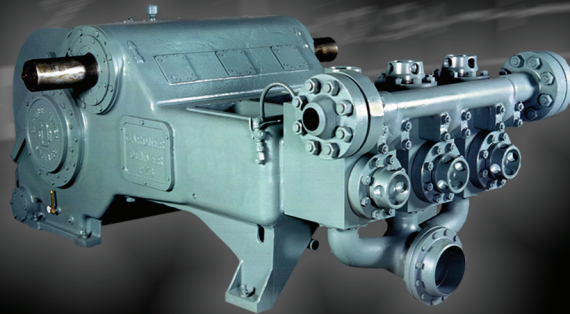
centrifugal  
pumps

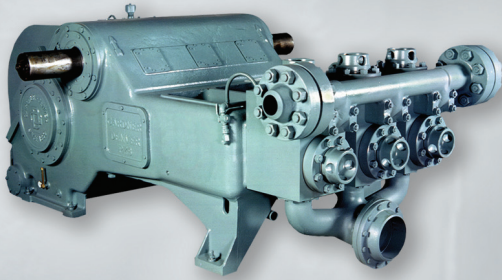


triplex/quintuplex  
pumps



duplex/triplex  
mud pumps





## Single-Acting Triplex Mud Pumps | 275 to 2000 HP

Gardner Denver drilling pumps are constructed of nodular iron which incorporates high strength and improved frame stiffness with lower stress levels, at approximately 25% less weight than mud pumps constructed with welded steel fabrications. Fluid cylinders are individually autofrettaged, forged, heat treated alloy steel for improved life. This smaller and lighter triplex design was originally developed for offshore drilling applications. These design features reduce handling and set-up costs, reduces maintenance costs and improves accessibility of expendable parts, while generating long-life and economical maintenance. These pumps will economically perform the following services: drilling, workover, cementing, acidizing, pipeline applications and slurry applications. \*

*\*For these applications consult the factory for ratings.*

| Pump Model (In.) | Horsepower (BHP) | Stroke (PSI) | Piston Size (In.) | Piston Load (lbs.) | Rate (GPM) | Pressure (PSI) Ranges |
|------------------|------------------|--------------|-------------------|--------------------|------------|-----------------------|
| PAH              | 275              | 8            | 3-5               | 22,030             | 128 357    | 1122-3118             |
| PZ-7 (PZG)       | 550              | 7            | 4-7               | 64,400             | 166 507    | 1673-5000             |
| PZ-8 (PZH)       | 750              | 8            | 4-7               | 76,800             | 189 580    | 1996-5000             |
| PZ-9 (PZJ)       | 1000             | 9            | 4-7               | 101,550            | 242 585    | 2639-5000             |
| PZ-10 (PZK)      | 1350             | 10           | 5.5-7             | 139,500            | 355 575    | 3624-5000             |
| PZ-11 (PZL)      | 1600             | 11           | 5.5-7             | 150,300            | 390 632    | 3905-5000             |
| PZ-11 (PZL)      | 1600             | 11           | 5-6.5             | 147,262            | 323 545    | 4527-7500             |
| PX-11 (PXL)      | 2000             | 11           | 5-7               | 186,875            | 323 632    | 4880-7500             |

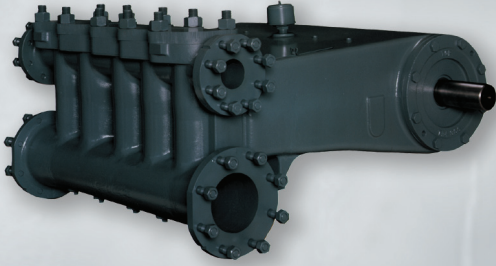


## Double-Acting Duplex Mud Pumps | 16 to 102 HP

Gardner Denver FX Double-Acting Duplex Mud Pumps are built and rated for pressures up to 1906 psi and flow rates rated as high as 487 gpm. The FXY 100 HP duplex pump is capable of up to 5000 psi. Fluid end sizes and fittings are available for all types of drilling service, from water well drilling applications to well service applications.

| Pump Model      | Horsepower (BHP) | Stroke (In.) | Piston Sizes (In.) | Rate (GPM) |      | Pressure (PSI) |      |
|-----------------|------------------|--------------|--------------------|------------|------|----------------|------|
|                 |                  |              |                    | Min.       | Max. | Min.           | Max. |
| FXFB (FF-FXF)   | 16               | 5            | 2.5-4.5            | 35         | 121  | 197            | 639  |
| FXFA (FF-FXF)   | 16               | 5            | 2.5-4              | 35         | 95   | 250            | 639  |
| FXGA (FG-FXG)   | 32               | 6            | 3-5                | 52         | 150  | 310            | 895  |
| FXXB (FD-FXX)   | 52               | 8            | 3-5.5              | 60         | 222  | 338            | 1136 |
| FXXD (FC-FXX)   | 52               | 8            | 3-5                | 60         | 182  | 409            | 1136 |
| FXXA (FY-FXX)   | 52               | 8            | 5-7.5              | 182        | 420  | 182            | 409  |
| FXDB/C (FD-FXD) | 85               | 10           | 3-5.5              | 70         | 257  | 475            | 1500 |
| FXDD (FC-FXD)   | 85               | 10           | 3-5                | 70         | 211  | 574            | 1500 |
| FXDA (FY-FXD)   | 85               | 10           | 5-7.5              | 211        | 487  | 255            | 574  |
| FXEA (FY-FXE)   | 102              | 10           | 5-7.5              | 211        | 487  | 305            | 686  |
| FXEB/C (FO-FXE) | 102              | 10           | 3-5.5              | 70         | 257  | 567            | 1500 |
| FXED (FC-FXE)   | 102              | 10           | 3-5.5              | 70         | 211  | 686            | 1906 |
| FXY (FC-FXX)    | 100              | 8            | 3-5                | 17         | 260  | 560            | 5000 |

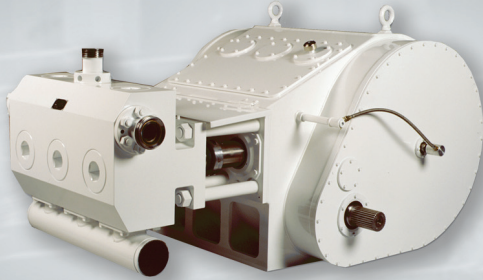




## Triplex and Quintuplex Plunger Pumps | 25 to 300 HP

Gardner Denver offers a complete line of plunger pumps designed to meet applications that require continuous service. Pumps range in size from 2-inch to 6-inch stroke and are rated from 25 to 300 horsepower. The Gardner Denver line has many fluid-end combinations to meet your application needs, including aluminum bronze for water-flood, salt water disposal, steam recovery, as well as carbon steel for pipeline testing, water-blast and hydrocarbon services.

| Pump Model    | Horsepower (BHP) | Stroke (In.) | Plunger Sizes (In.) | Rate (GPM) |      | Pressure (PSI) |       |
|---------------|------------------|--------------|---------------------|------------|------|----------------|-------|
|               |                  |              |                     | Min.       | Max. | Min.           | Max.  |
| GD-25T (TOB)  | 25               | 2            | 1-2.25              | 5          | 62   | 675            | 2250  |
| GD-45T (TOW)  | 45               | 2.5          | 1-2.75              | 6          | 106  | 675            | 5000  |
| GD-55T (TOC)  | 55               | 3            | 1.75-3              | 19         | 110  | 735            | 2100  |
| GD-65T (TAC)  | 65               | 3            | 1-3                 | 5          | 138  | 735            | 5000  |
| GD-100T (TDD) | 100              | 4            | 1.75-3.5            | 22         | 213  | 745            | 3000  |
| GD-125T (TEE) | 125              | 5            | 1-4                 | 5          | 286  | 675            | 6500  |
| GD-135Q (QBX) | 135              | 3.5          | 1.5-3               | 25         | 268  | 780            | 3110  |
| GD-150T (TAE) | 150              | 5            | 1.25-4.25           | 14         | 341  | 680            | 7850  |
| GD-180T (TFE) | 180              | 5            | 1.25-4.25           | 14         | 341  | 815            | 9415  |
| GD-205T (TFE) | 205              | 5            | 1.25-4.25           | 14         | 341  | 930            | 10000 |
| GD-215T (THE) | 215              | 5            | 4-5.5               | 41         | 462  | 720            | 2944  |
| GD-300Q (QAF) | 300              | 6            | 1.375-4.5           | 34         | 764  | 605            | 6480  |



## Large Triplex and Quintuplex Plunger Pumps | 300 to 1375 HP

Gardner Denver offers a flexible line of large plunger pumps to meet extended and continuous duty applications. This line is offered with forged steel VOV, steel inline and stainless steel inline fluid ends.

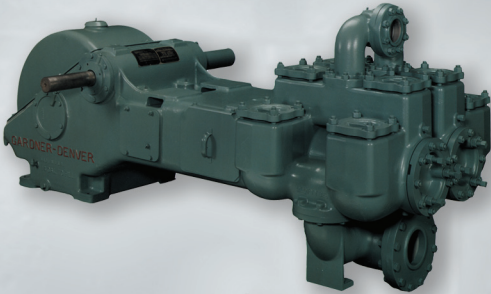
| Pump Model | Horsepower (BHP) | Stroke (In.) | Plunger Sizes (In.) | Rate (GPM) |      | Pressure (PSI) |       |
|------------|------------------|--------------|---------------------|------------|------|----------------|-------|
|            |                  |              |                     | Min.       | Max. | Min.           | Max.  |
| OPI-600    | 300              | 6            | 2-5                 | 12         | 459  | 1000           | 14330 |
| GD-1000    | 600              | 6            | 2-6.5               | 12         | 775  | 1195           | 20000 |
| HD-2250    | 1100             | 8            | 3-7.5               | 37         | 1147 | 1486           | 13450 |
| GD-2500Q   | 1375             | 8            | 3-6.75              | 61         | 1206 | 1760           | 14150 |



## Continuous Duty Duplex Steam Pumps | 16 to 133 HP

**Air, Steam or Gas Operated** Gardner Denver pumps have been used around-the-world for over 100 years. Air pumps are ideal for injecting chemicals into the air stream during air drilling and well cleaning applications. Other uses are mine de-watering, boiler feed, cementing, testing, gunniting, crude oil transmission and slush service.

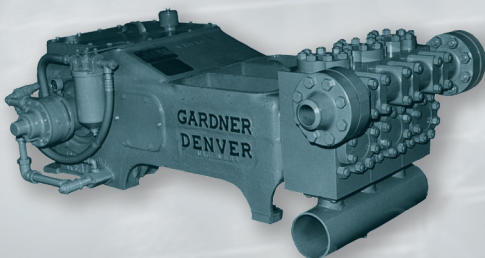
| GENERAL SERVICE |                           |            |              |            |      |                |
|-----------------|---------------------------|------------|--------------|------------|------|----------------|
| Pump Model      | Max. Steam Pressure (PSI) | Size (In.) | Stroke (In.) | Rate (GPM) |      | Pressure (PSI) |
|                 |                           |            |              | Min.       | Max. | Max.           |
| DAAB (AA-AA)    | 250                       | 2.5x1.5x3  | 3            | 4          | 9    | 250            |
| DABB (AB-AB)    | 250                       | 3x2x3      | 3            | 8          | 16   | 250            |
| DAEB (AE-AE)    | 250                       | 4.5x3x4    | 4            | 23         | 47   | 250            |
| DAGA (AG-AG)    | 250                       | 6x4x6      | 6            | 57         | 114  | 250            |
| DAGA* (FG-AG)   | 400                       | 6x5x6      | 6            | 21         | 180  | 900            |
| DFSB (FD-FS)    | 400                       | 10x5x10    | 10           | 21         | 195  | 1500           |
| DFSA* (FY-FS)   | 400                       | 10x7.5x10  | 10           | 97         | 450  | 650            |
| DFSC* (FC-FS)   | 400                       | 10x5x10    | 10           | 21         | 195  | 3580           |



## Continuous Duty Duplex Production Pumps | 16 to 133 HP

**Oil line, mining and industrial service** Gardner Denver FX Duplex Pumps are widely used for oil line, mining, industrial and general water service. Typical applications include oil line pumping, chemical and petroleum products transfer, mine dewatering and wash-down service on oil field drilling rigs. These pumps can be sized and fitted to meet the specific demands of almost every application.

| Pump Model   | Horsepower (BHP) | Stroke (In.) | Piston Size (In.) | Rate (GPM) |      | Pressure (PSI) |      |
|--------------|------------------|--------------|-------------------|------------|------|----------------|------|
|              |                  |              |                   | Min.       | Max. | Min.           | Max. |
| FXF (FF-FXF) | 16-20            | 5            | 2.5-4             | 35         | 149  | 197            | 639  |
| FXG (FG-FXG) | 32-43            | 6            | 3-5               | 52         | 200  | 310            | 895  |
| FXX (FD-FXX) | 46-73            | 8            | 3-5.5             | 54         | 317  | 338            | 1136 |
| FXX (FY-FXX) | 46-73            | 8            | 3-5               | 54         | 260  | 409            | 1136 |
| FXX (FC-FXX) | 46-75            | 8            | 5-7.5             | 164        | 600  | 182            | 409  |
| FXD (FD-FXD) | 73-109           | 10           | 3-5.5             | 61         | 337  | 475            | 1500 |
| FXD (FY-FXD) | 73-109           | 10           | 3-5               | 61         | 276  | 574            | 1500 |
| FXD (FC-FXD) | 73-111           | 10           | 5-7.5             | 185        | 637  | 255            | 574  |
| FXE (FD-FXE) | 87-133           | 10           | 5-7.5             | 185        | 637  | 305            | 686  |
| FXE (FY-FXE) | 87-131           | 10           | 3-5.5             | 61         | 337  | 567            | 1500 |
| FXE (FC-FXE) | 87-130           | 10           | 3-5               | 61         | 276  | 686            | 1900 |

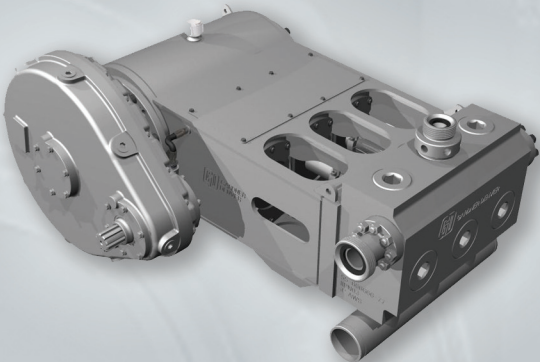


## Intermittent Duty Well Service Pumps

### Gardner Denver Triplex Pumps | 165 to 400 HP

Gardner Denver Well Servicing Pumps are specifically designed for cementing, acidizing, sand control, hot oil service, and general work-over service. With intermittent duty service and pressure ratings to 10,000 psi, Gardner Denver Well Servicing Pumps not only meet but surpass the rugged demands of the petroleum service industry.

| Specifications          | 3x5 & 4x5 TEE | TGE    | TGF    | PAH     | TGH     |
|-------------------------|---------------|--------|--------|---------|---------|
| Rated Brake Horsepower  | 165           | 165    | 225    | 310     | 400     |
| Stroke Length (inches)  | 5             | 5      | 6      | 8       | 8       |
| Maximum Rod Load (lbs.) | 44,000        | 44,000 | 84,000 | 127,235 | 159,000 |
| Gear Ratio              | NA            | 5:1    | 5:1    | 4.7:1   | 10.15:1 |

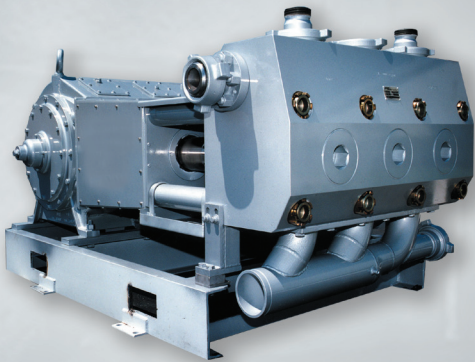


### Intermittent Duty Triplex Pumps | 600 to 1000 HP

Gardner Denver is proud to offer two of the most well known names in oil field service pumps. The OPI and Geoquip product lines fulfill client needs for rugged, high rod load, high horsepower pumps. Applications include: truck, trailer and skid mounted cementers, acidizing units and stimulation equipment.

| Pump Specifications      | Compact | OPI 600 | GD-1000 |
|--------------------------|---------|---------|---------|
| Rated Brake Horsepower   | 600     | 600     | 1000    |
| Stroke Length (inches)   | 6       | 6       | 6       |
| Maximum Road Load (lbs.) | 100,000 | 100,000 | 188,500 |
| Gear Ratio               | 4.6:1   | 4.68:1  | 5.74:1  |



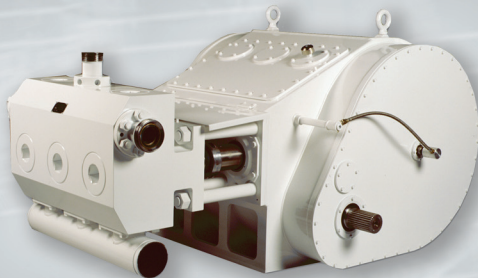


## Intermittent Duty Well Stimulation Pumps

### *GD Specialty Triplex Pumps* | 1250 to 3000 HP

Gardner Denver recognized the need for specifically designed equipment to meet customer's specific design criteria. The Gardner Denver line of stimulation pumps utilizes the most advanced designs and material selections to reduce pump weights as much as 30 percent while offering the highest rod load to weight ratios available.

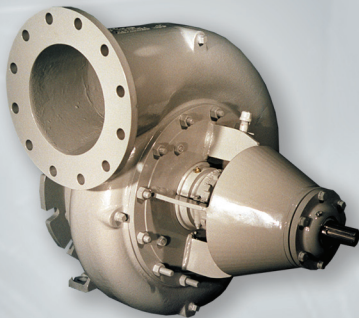
| Pump Specifications     | GD-1250 | GD-3000 |
|-------------------------|---------|---------|
| Rated Brake Horsepower  | 1250    | 3000    |
| Stroke Length (inches)  | 8       | 11      |
| Maximum Rod Load (lbs.) | 200,000 | 350,000 |
| Gear Ratio              | 9:1     | 7.8:1   |
| Dry Weight (lbs.)       | 8,500   | 18,550  |



### *OPI Style Triplex and Quintuplex Pumps* | 2250 to 2500 HP

The well stimulation industry has continued to require higher horsepower pumps which can be truck, skid and trailer mounted for deployment in some of the harshest environments. Gardner Denver continues to employ new technology to ensure these pumps deliver. As our industry changes so do our products — improvements to design, material specifications and craftsmanship allows Gardner Denver to offer the largest variety of products to meet our customers' requirements and price.

| Pump Specifications     | HD-2250 | C-2250  | GD-2500Q | C-2500Q |
|-------------------------|---------|---------|----------|---------|
| Rated Brake Horsepower  | 2250    | 2250    | 2500     | 2500    |
| Stroke Length (inches)  | 8       | 8       | 8        | 8       |
| Maximum Rod Load (lbs.) | 237,500 | 250,000 | 196,350  | 225,000 |
| Gear Ratio              | 6.353:1 | 6.353:1 | 6.353:1  | 6.353:1 |
| Dry Weight (lbs.)       | 14,000  | 13,700  | 14,600   | 18,800  |



## Centrifugal Pumps

Gardner Denver has an assortment of rugged, light to medium weight centrifugal pumps that can be used in a variety of oilfield operations. The segmented construction allows for easy, low cost maintenance as well as the ability to modify rotation, packing, wear plates, and drive shafts to meet your needs.

| Pump Model     | Operation Ranges (BHP) | Pressure Ranges (PSI) | Flow Rates (GPM) |
|----------------|------------------------|-----------------------|------------------|
| 4x5 C-Pump     | 5-30                   | 15-50                 | 200-950          |
| 5x6 C-Pump     | 10-60                  | 20-70                 | 200-1150         |
| LX C-Pump      | 20-100                 | 30-100                | 50-1150          |
| 10x12 C-Pump   | 50-200                 | 15-85                 | 500-4500         |
| 10x12HD C-Pump | 50-280                 | 15-110                | 500-5000         |

# Replacement Parts and Repair Service

## Replacement Parts and Repair Service

### Genuine Gardner Denver Replacement Parts

***Expendable parts manufactured to original specifications from the people who have been making pumps tougher for over 100 years.***

When you need replacement parts for your pump, insist on genuine Gardner Denver® products. Our pump products have served the petroleum and industrial markets dependably for decades. You know you can trust Gardner Denver parts because they are designed and quality checked to rigid specifications by the same engineers and craftsmen who design and build our pumps. Our factories utilize state-of-the-art manufacturing methods, highly efficient equipment and highly skilled craftsmen allowing Gardner Denver to produce a high quality product at very competitive prices. You can also feel confident that our products have been field tested to assure performance, long life and trouble-free operation.

Our service begins close to you with five strategically located warehouses and a network of over 100 authorized distributors committed to stocking the parts you need — when you need them. Plus, a ready supply to assure you of fast delivery.

### Repair and Service Capabilities

Who better to repair your pump than the company you bought it from in the first place. Gardner Denver offers you two locations dedicated to rebuilding, remanufacturing or repairing your pump power end, fluid end, or complete pump assembly. Highly-trained technicians will remove, repair and test your pump in a shop designed to get your unit back to work as quickly as possible. Supported with a full-line of original Gardner Denver parts, our Ft. Worth, Texas, and Odessa, Texas, are logistically located to expedite repairs to factory specifications.

# **Gardner**

---

# **Denver**

Drilling & Production Pumps  
Quincy, IL 62301  
Phone: 217-224-8800

Drilling & Production After-Market  
Oklahoma City, OK 73129  
Phone: 405-677-5736

Well Service Pumps  
Tulsa, OK 74145  
Phone: 918-828-7800

Service Center  
Fort Worth, TX 76126  
Phone: 817-249-6400

Service Center  
Odessa, TX 79764  
Phone: 432-366-5433

< [www.gardnerdenver.com](http://www.gardnerdenver.com) >